

Earth to Business

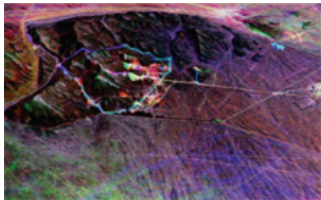
the ERDAS E-Newsletter

www.erdas.com

ERDAS INSIGHTS

Radar-Based Coherence Change Detection

RADAR mapping offers a highly complementary alternative to traditional optical imaging and mapping methods, providing different perspectives on the Earth's surface. **IMAGINE Radar Mapping Suite**, a bundle of specialized radar-processing modules within ERDAS IMAGINE, offers sophisticated processing techniques in an easy-to-use, automated interface so even radar novices can extract critical information.



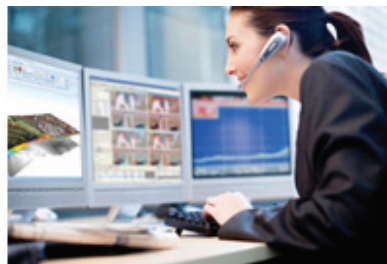
Join us for a free webinar on October 12 to learn more about the suite's Coherence Change Detection (CCD) module, which produces georeferenced raster and vector change maps. We will also showcase the new Radar Incoherence and Inverse Coherence utilities for enhancing the visual interpretability of CCD images.

[Learn more](#)

PRODUCT NEWS

Cloud Removal in ERDAS IMAGINE® 11.0.3

ERDAS IMAGINE® 11.0.3 is now available for download on the ERDAS website. This latest ERDAS IMAGINE service pack features a number of new enhancements to MosaicPro, a tool for creating seamless image mosaics. Users can now quickly and easily remove clouds from their image mosaics by digitizing cloud areas and manually adjust the radiometry of individual images. MosaicPro now also allows users to use batch and distributed processing when outputting image tiles. Additionally, ERDAS IMAGINE 11.0.3 provides two new options for supervised classification of multispectral imagery, the spectral angle mapper and spectral correlation mapper algorithms, as well as the ability to use a shapefile to add a signature for supervised classification.



Software maintenance customers may download the upgrade at www.erdas.com/support. This installer will upgrade existing installations from ERDAS Software 2011 to ERDAS Software 2011, Version 11.0.3.

Software maintenance customers may download the upgrade at www.erdas.com/support. This installer will upgrade existing installations from ERDAS Software 2011 to ERDAS Software 2011, Version 11.0.3.

Webinars

September 23, 2011

Flujo de Trabajo para Detección de Cambios y Procesamiento de Imágenes Multiespectrales con ERDAS 2011

October 5, 2011

Synergy Series: Unlock the Value of Full Motion Video

October 12, 2011

Radar-Based Coherence Change Detection for National Security

New Archived Webinars Available:

Live Link: Uniting Intergraph's GeoMedia & ERDAS IMAGINE to Enrich Your Workflows

GeoEye Imagery and IMAGINE Objective: CAPITALIZE on Your Imagery Investment

[Click here to view all our Archived Webinars!](#)

Training

Did you know that ERDAS offers **training** in Australia & New Zealand, the USA and Online? For more info, e-mail training@erdas.com.

Online Classes:

September 28: **ERDAS IMAGINE for the Image Analyst**

September 29-30: **Fundamentals of ERDAS IMAGINE 2**

October 4: **Spatial Modeling**

Watch new episodes now!



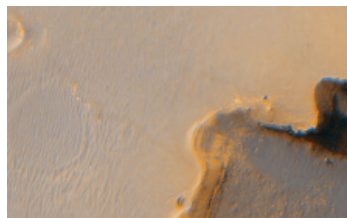
Continued on next page...

Continued on next page...

...continued from previous page

CUSTOMER SUCCESS STORY

ERDAS APOLLO Serves Mission Data from Saturn and Mars Exploration



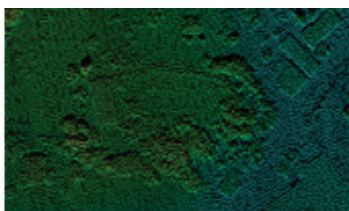
The Italian Space Agency (ASI) is using **ERDAS APOLLO** to manage data collected from the Cassini-Huygens, Mars Express, and Mars Reconnaissance Orbiter (MRO) space missions and deliver it for public consumption via a web portal. **ERDAS APOLLO Essentials - Image Web Server** was ultimately selected because it can

efficiently and quickly publish the radargrams and interplanetary maps. Now, after mission data is processed in the individual operating centers, ERDAS APOLLO will be used to catalog it and publish it to the web portal. Then, the scientific community and the public at large will be able to access the data via GeoRSS and OGC web services such as WMS, WFS, WCS, and WMC. [Read More](#)

FEATURED TECHNOLOGY

Catalog LiDAR and View in ArcMap with ERDAS APOLLO

As use of LiDAR becomes more commonplace, organizations must contend with storing these inherently large files and delivering them to other applications, such as Esri's ArcMap, quickly and efficiently. **ERDAS APOLLO** enables centralization, management and dissemination of massive volumes of geospatial data, including point-clouds (LiDAR), so users can easily access what they need, when they need it. With ERDAS APOLLO, you can discover and serve large collections of LiDAR data, automatically catalog your LAS data holdings and search the catalog, view the data using different styles, and download the data in either the original LAS format or as a DEM to use in other applications



[Read more, and watch the video](#)

TRAINER TIP

Quick Tip: ERDAS IMAGINE



So you finally got your updated imagery and you found that there is a new building. Is that a new hardware store or a school? If you have Google Earth installed on your system, ERDAS IMAGINE can automatically sync the views together

and you can see that the new building is a new furniture store. Good, this desk chair was feeling uncomfortable.

Learn other image exploitation techniques in our 4-hour online course [ERDAS IMAGINE for the Image Analyst](#).

STAY CONNECTED WITH ERDAS



demo.erdas.com

info@erdas.com

Copyright © 2011 ERDAS, an Intergraph® brand. All rights reserved. ERDAS IMAGINE is a registered trademark of ERDAS. All other brands and product names are the property of their respective owners.

...continued from previous page

Atlanta, Georgia, USA:

October 24-26: **Fundamentals of ERDAS IMAGINE 1**

October 27-28: **Fundamentals of ERDAS IMAGINE 2**

October 31-November 1: **Spatial Modeling and Expert Systems**

Melbourne, Australia:

October 18-20: **Introduction to LPS**

Adelaide, Australia:

October 31-November 2: **Fundamentals of ERDAS IMAGINE 1**

Leige, Belgium:

October 24-28: **Advanced ERDAS APOLLO Training**

Tradeshows

September 27-29
Intergeo 2011
Nuremberg, Germany

October 12-13
Intergraph 2011 UK User Conference
Swindon, UK

October 16-19
GEOINT 2011 Symposium
San Antonio, TX, USA

ERDAS in the News

Find the latest ERDAS news in the [Online Media Room](#).

Join the LinkedIn
ERDAS Users &
Developers Group

