

# ERDAS Desktop Command Line Documentation

## Table of Contents

- 1 Background and Notes
  - 1.1 About this Document
  - 1.2 ERDAS Installers Discussed
  - 1.3 Install Using the Setup Executable or .msi?
  - 1.4 Explanation of Application Family and Install History
  - 1.5 Multiple Versions of Products
- 2 General Command Line Options and Properties
  - 2.1 InstallShield Command Line Options
  - 2.2 Windows Installer Command Line Options
  - 2.3 Windows Installer Properties
- 3 Installation Types
  - 3.1 Administrative Installations
  - 3.2 Advertised Installation
  - 3.3 Transforms
- 4 Prerequisite Installations
  - 4.1 ERDAS 2011 Prerequisites
  - 4.2 ERDAS 2010 Prerequisites
- 5 ERDAS Installer Command Line Options and Properties
  - 5.1 Environment Variables
  - 5.2 Common ERDAS IMAGINE and LP Command Line Options
- 6 ERDAS IMAGINE Installer Values
  - 6.1 ERDAS IMAGINE Product GUID
  - 6.2 ERDAS IMAGINE 2011 (v11) Feature Codes
- 7 LPS Installer Values
  - 7.1 LPS Product GUID
  - 7.2 LPS 2011 (v11) Feature Codes
- 8 ER Mapper Installer Values
  - 8.1 ER Mapper Product GUID
  - 8.2 ER Mapper 2010 Feature Codes
- 9 Java Versions in ERDAS IMAGINE and LPS
- 10 Appendices
  - 10.1 Appendix 1: Additional Command Line Examples
  - 10.2 Appendix 2: Previous Release Notes
    - 10.2.1 LPS 9.2 and 9.3
  - 10.3 Appendix 3: Previous Release Feature Codes
    - 10.3.1 ERDAS IMAGINE 2010 (v10) Feature Codes
    - 10.3.2 IMAGINE 9.3 Feature Codes
    - 10.3.3 IMAGINE 9.2 Feature Codes
    - 10.3.4 LPS 2010 (v10) Feature Codes
    - 10.3.5 LPS 9.3 Feature Codes
    - 10.3.6 LPS 9.2 Feature Codes
    - 10.3.7 ER Mapper 2010 Feature Codes

## Background and Notes

### About this Document

This document contains information and background useful for those who might wish to use the Windows command line to deploy ERDAS IMAGINE, LPS, ER Mapper, and their related Update or Service Packs installers. Utilizing the command line to deploy a product is often useful for those who wish to execute silent installations or uninstallations of Windows Installer based installers. General knowledge of this topic, however, is also useful for other deployment related tasks, such as enabling logging during an installation or uninstallation.

This documentation assumes that the user possesses a basic knowledge of Windows command line scripting techniques, and is familiar with both Windows environment variables and the concepts of variables and properties.

Many more options exist for Windows Installer than are referenced here. This document highlights what are perhaps most useful or important

parameters, options, and variables needed to deploy our products. For additional information on Windows Installer, we suggest reviewing the Windows Installer online documentation at: [http://msdn2.microsoft.com/en-us/library/cc185688\(VS.85\).aspx](http://msdn2.microsoft.com/en-us/library/cc185688(VS.85).aspx)

## ERDAS Installers Discussed

The following installers are discussed in this document:

- ERDAS IMAGINE 9.2, 9.3, 2010, 2011
- LPS 9.2, 9.3, 2010, 2011
- ER Mapper 2010 and 2011

## Install Using the Setup Executable or .msi?

Many ERDAS installers are assembled using the InstallShield installer development application, which can be used to generate Windows Installer setup programs. The core Windows Installer setup program is a file with an .msi extension. Often the .MSI file is accompanied by a setup launcher executable, which performs necessary initializations, such as requesting local administrator credentials, before running the .msi.

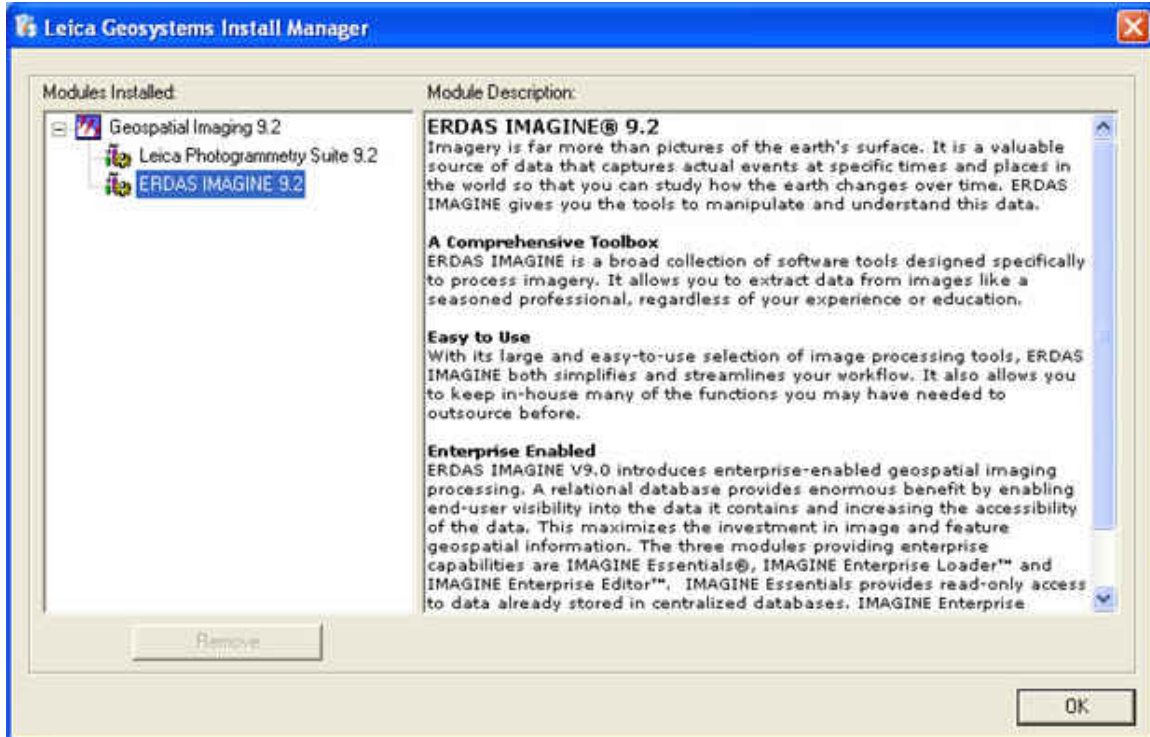
While an .msi file might exist for a given application (ex. ERDAS IMAGINE 9.2.msi), the primary and recommended means for installing ERDAS applications is via the provided setup executable (ex. setup.exe).

## Explanation of Application Family and Install History

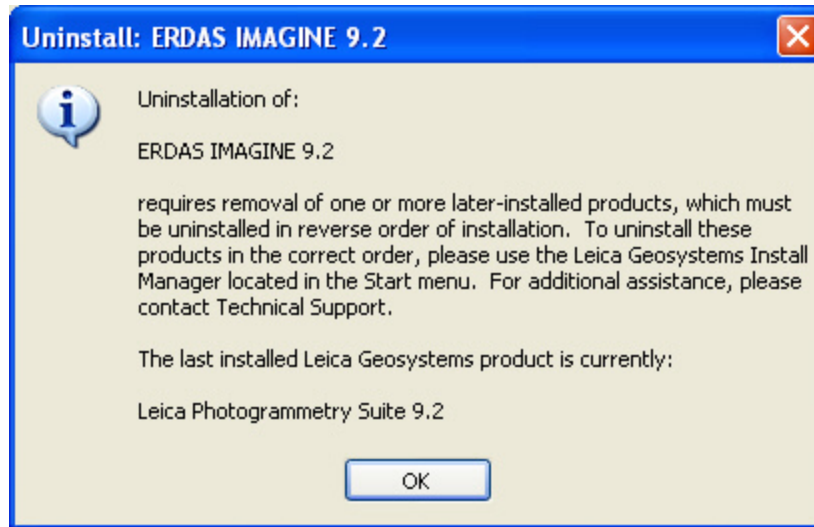
Versions of ERDAS IMAGINE, LPS, and ER Mapper share a common installation directory and as a result, share what is termed an "Application Family" or sometimes "Deployment Family." Applications installed for a given Application Family must be uninstalled in reverse order of installation (last in, first out) to ensure application consistency. The order of installation, or "installation history," is recorded in the registry and the uninstall order is enforced by custom code in the installers.

The install history can be observed from the Install Manager application installed with ERDAS IMAGINE, LPS, and ER Mapper. The Install Manager shortcut is located at: Start Menu | All Programs | ERDAS (Release Year) | Install Manager.

In the example below, "Geospatial Imaging 9.2" is the Application Family. The disabled "Remove" button shown when highlighting ERDAS IMAGINE 9.2, indicates that the Leica Photogrammetry Suite 9.2 was installed after ERDAS IMAGINE 9.2. As a result, LPS must be uninstalled before ERDAS IMAGINE can be removed. Also note that items installed last appear at the top of the installation order in the Install Manager.



It is also possible to use the Windows install and uninstall programs Control Panel to remove installers within an Application Family. Note that LIFO uninstallation rules are enforced; if you attempt to remove something other than the most recent installer within an Application Family, a dialog such as the one below will be displayed.



## Multiple Versions of Products

- **ERDAS IMAGINE** - Multiple versions of ERDAS IMAGINE can be installed and successfully operated on the same system.
- **ER Mapper** - Multiple versions of ER Mapper can be installed and successfully operated on the same system.
- **LPS** - Starting with LPS 9.3, LPS can be installed with both previous and subsequent versions of LPS. Versions of LPS prior to LPS 9.3 cannot be installed on the same system due to shared libraries and components that exist across versions.

## General Command Line Options and Properties

### InstallShield Command Line Options

InstallShield command line options are values that are passed to the InstallShield Setup executable (ex. setup.exe).

/S	<p>Suppresses the Setup.exe initialization window.</p> <p>ex. setup.exe /S</p>
/V	<p>Is used to pass command-line options and values of Windows properties through to Windows Installer. Values must be supplied in quotes.</p> <p>ex. setup.exe /V"/qn"</p>
/V"ISSCRIPTCMDLINE=\\Option1 Option2\""	<p>ISSCRIPTCMDLINE specifies command line parameters that are passed to custom code within the installer.</p> <p>/V (see previous) is required. Backslashes and quotes around ISSCRIPTCMDLINE are required. Backslashes escape the quotes.</p> <p>Ex. Setup.exe /V"ISSCRIPTCMDLINE=\\n/f\""</p>
/B	<p>Instructs the setup.exe to cache a local copy of the installer's .msi and .cab files. This can be particularly useful if it is likely that an install will need the ability to be reinstalled or repaired, but the computer may potentially have no access to the original install location and files. For instance, installing a product from a network share onto a laptop, which has the potential to operate disconnected from the network.</p> <p>Make certain that the system has enough free space for the installers files before attempting to use this option.</p>

/F	<p>Forces setup.exe to initiate an update sequence on an already installed product. With typically developed Windows Installer based installers, if you have installed a product and then re-run the setup, you will be presented with a Maintenance Mode dialog. This dialog allows you to Remove, Modify or Repair the exiting installation. When you see this dialog, the .msi as present in the setup.exe is not actually running. Instead, Windows Installer launches a cached version of the .msi that it holds on to for uninstall purposes.</p> <p>In certain cases, it is desirable to re-run the the original installation. For example, it is helpful to run the original installation if the cached .msi has become corrupt resulting in failed uninstalls. The /F switch will allow you to reinstall the current product forcing Windows Installer to re-cache the .msi allowing for a proper removal.</p>
----	-------------------------------------------------------------------------------------------------------------------------------------------------------------------------------------------------------------------------------------------------------------------------------------------------------------------------------------------------------------------------------------------------------------------------------------------------------------------------------------------------------------------------------------------------------------------------------------------------------------------------------------------------------------------------------------------------------------------------------------------------------------------------------------------------------------------------------------------------------------------------------------------------------------------------

## Windows Installer Command Line Options

The following options are passed to Windows Installer and control behavior such as interface levels and logging. While these options can be passed to Windows Installer directly via the msixec.exe executable, because our installers are launched from a setup executable, these properties are passed into Windows Installer using the /V InstallShield command line option (see above).

/x Package ProductCode	<p>Uninstalls a product. The Package Code is Windows Installer convention and is a GUID value (a unique identifier) that is built into a given installer.</p> <p>Ex. msixec /x {FCA6E3C0-3CA1-4985-B58B-D27AF658B02B}</p>
/l [vx*] Path to outputfile	<p>Enables logging to an output file. Note that the directory specified in the path to the file must exist or the installer will fail to launch.</p> <p>v - Verbose output. x - Extra debugging information. *** - Wildcard, log all information except for the v and x options. To include the v and x options, specify "/l*vx".</p> <p>Ex. setup.exe /V"/lvx* "C:\my temp dir\logfile.txt"</p> <p>In this example, the "C:\my temp dir" directory must be present before launching the setup.</p>
/q[n b r f]	<p>Sets the user interface level.</p> <ul style="list-style-type: none"> <li>• q , qn - No UI.</li> <li>• qb - Basic UI. Standard Windows Installer dialogs are displayed to indicate installation progress. Use qb! to hide the <b>Cancel</b> button.</li> <li>• qr - Reduced UI. Only non modal dialogs are displayed (progress bar, status dialogs etc. no user interaction is required)</li> <li>• qf - Full UI - Default setting if not specified</li> </ul> <p>Ex. setup.exe /V"/qn"</p>

## Windows Installer Properties

Windows Properties can be passed on the command line to change install behavior. When launching the install from the InstallShield setup executable, these values must be provided using the /V option. Properties are supplied as: PROPERTYNAME=<propertyvalue>. Use spaces to delineate when supplying multiple properties on the commandline (see Appendix 1: Additional Command Line Examples below).

**Feature Codes:** Many properties reference a list of feature codes (ADDLOCAL, etc.) that can be used to install or remove portions of an application. The full list of available feature codes for both ERDAS IMAGINE, LPS, and ER Mapper are listed in sections that follow. When using a feature code to install a particular feature, only the files and shortcuts directly associated in the installer with that feature will be installed, subfeatures are not installed. For example, the "imhelp" feature will install Start Menu shortcuts for documentation, but the "imhess" subfeature of "imhelp" will not.

The list of available Windows Installer properties is greater than shown here. We have highlighted what we feel are the most pertinent properties when installing and uninstalling from the command line.

ADDLOCAL	The value of the <b>ADDLOCAL</b> property is a list of features that are delimited by commas, and are to be installed locally. The default value is: ADDLOCAL=ALL which installs all features.
REMOVE	The <b>REMOVE</b> property is a list of features delimited by commas that are to be removed. Note that if you use REMOVE=ALL on the command line, the installer removes all features
REINSTALL	The value of the <b>REINSTALL</b> property is a list of features delimited by commas that are to be reinstalled. The features listed must be present in the Feature column of the Feature table. To reinstall all features use REINSTALL=ALL on the command line. Note that even if <b>REINSTALL</b> is set to ALL, only those features that were already installed previously are reinstalled.

INSTALLDIR	<p>INSTALLDIR is actually an InstallShield convention, however, it is managed like a Windows Installer property. The value of INSTALLDIR overrides the default application installation directory that is built into the installer. Paths with spaces must be quoted. Backslashes are required to escape quotes when quoted paths are used.</p> <p>Ex. Setup.exe /V"INSTALLDIR="C:\Program Files\Leica Geosystems\Geospatial Imaging 9.2\""</p>
------------	-------------------------------------------------------------------------------------------------------------------------------------------------------------------------------------------------------------------------------------------------------------------------------------------------------------------------------------------------------------------------------------------------------------------------------------------------

## Installation Types

### Administrative Installations

Administrative installations are a natively supported install mode of all Windows Installer packages. An administrative installation allows a system administrator, or software deployment engineer, to prepare a vendor provided installation for deployment via a software deployment infrastructure such as Active Directory Group Policy, SMS, or the like. Please note that an Administrative installation does not actually install the product on a machine, but rather prepares a product for installation on other machines in an enterprise. This functionality is accessed from the the install when using the /A option and can be coupled with the TARGETDIR property to specify the location of the extracted install contents.

Examples:

- Setup.exe /A
- Setup.exe /A /V"TARGETDIR=\\INSTALLSERVER\Repository\ERDAS IMAGINE\"
- Setup.exe /A /V"TARGETDIR=\\INSTALLSERVER\Repository\ERDAS IMAGINE\qb"

An administrative installation creates a modified .MSI file and a folder path of uncompressed installation files at the location specified. This has 2 main benefits:

1. Only files needed by the install get copied to the machine (for instance if not all features are installed)
2. Enterprise wide configuration settings can be prestaged in the extracted configuration files since they are extracted and available

### Advertised Installation

Advertised installations are a feature of Windows Installer sometimes referred to as Install-On-Demand. This functionality is available when running an installation with the /J command line option, or by using Active Directory to assign an application to a user. In order for this functionality to work, all potential access points such as file associations, shortcuts, MIME types, etc. in an installer must be configured in what is referred to as Advertised mode.

ERDAS currently does not support the use of Advertised installation functionality as a deployment option for its products.

### Transforms

Transforms (.MST files) are a method provided by Microsoft for making changes to an installation package at runtime. Transforms are applied on the command line using the TRANSFORMS property.

- Setup.EXE /V"TRANSFORMS=C:\MYFILE.MST"
- msixec.exe /I C:\MYINSTALL.MSI TRANSFORMS="C:\MYFILE.MST"

Transforms can be created in several different ways. First, an MSI can be directly opened in a MSI editing tool and the raw database changes stored off into a .MST file. Second, one can use a repackaging tool that allows a package deployment engineer to step through the normal installation dialogs recording the output on each dialog and storing the results in a .MST file. Finally, a vendor may provide a product specific tool for creating an .MST (Microsoft has done this in the past for Microsoft Office to ease unattended deployment).

ERDAS currently does not support the creation and/or usage of .MSTs as a deployment option for its products.

### Prerequisite Installations

Prerequisites are other components or products that require installation before another product can be installed. They are typically installed prior to the installation of the main product and must install successfully before the main product's installer will launch. The prerequisites for ERDAS Desktop software are listed here. For silent or unattended installations, if the component is missing, the prerequisite is automatically installed during installation of the product.

The following table lists the prerequisite installers utilized by ERDAS Desktop software.

### ERDAS 2011 Prerequisites

Prerequisite	ERDAS IMAGINE	LPS	ER Mapper	Command Line Installation
ERDAS Foundation 2011	✓	✓	✓	setup.exe /S /V"/qn"
64-bit Microsoft .NET Framework 2.0 (32-bit is installed via the LPS setup.exe  no separate command line is available)		✓		NetFx64.exe /q:a /c:"install.exe /q"  (see note below)

With the ERDAS 2010 software release, ERDAS IMAGINE, LPS, and ER Mapper began deploying components that are provided as separate installer executables as installation prerequisites. The prerequisite functionality within the installers, detects during the start up phase of installer, if the component is missing from the target system. If the component is missing the installer will presents a dialog allowing you to install one or more of the missing components.

## ERDAS 2010 Prerequisites

Prerequisite	ERDAS IMAGINE	LPS	ER Mapper	Command Line Installation
ERDAS-Net Licensing	✓	✓	✓	For documentation on performing Silent or Unattended installations of ERDAS-Net Licensing, please see the ERDAS-Net Licensing Installation Guide.
Microsoft .NET Framework 2.0 SP1 (32-bit)		✓		netfx20sp1_x86.exe /q /norestart (see note below)
Microsoft .NET Framework 2.0 (64 bit)		✓		NetFx64.exe /q:a /c:"install.exe /q" (see note below)

- Command line installation notes regarding the Microsoft .NET Framework apply to Windows XP. For Microsoft operating systems newer than Windows XP, the .NET Framework is deployed using Windows Update.

## ERDAS Installer Command Line Options and Properties

### Environment Variables


The ERDAS IMAGINE and LPS installers will call portions of application code during setup. Environment variables set, either on the command line or in scripts using the "SET" DOS command, do not affect the behavior of the installers. Environment variables must be set in the system in order to alter the behavior of installation. The below values are not Windows Installer properties that can be set by passing values directly to the ERDAS setup programs.

Environment Variable	Effect
HOME_NOT_ACCESSIBLE_ALREADY_COMPLAINED	When installing in an environment where the user's \$HOMEDRIVE/\$HOMEPATH drive is unwritable, this variable prevents the appearance of a dialog during install that indicates the directory is unwritable. The dialog requires a user to press the "OK" button to continue, which will interrupt an unattended installation. For ERDAS IMAGINE 9.2 and higher, this can work around warning messages related to the "C:\Users" folder.  Example:  SET HOME_NOT_ACCESSIBLE_ALREADY_COMPLAINED=1
UNATTENDED_ERDAS_INSTALLATION	Disables various message boxes that can appear during installation. Designed so that Silent or Unattended installations can complete without interruption.  Example:  SET UNATTENDED_ERDAS_INSTALLATION=1

## Common ERDAS IMAGINE and LP Command Line Options

Starting in version 9.2, the following command line options are common to the following installers:

- ERDAS IMAGINE
- LPS
- ER Mapper (Starting in 10.0)
- Update installers that install into the Application Family.

FR (Force Remove)	<div style="background-color: #ffe6e6; padding: 10px; border: 1px solid #ccc;">  <p>Note: This option is only intended to assist with the blanket removal of applications from the system. Once used, all applications that were installed the Application Family must be removed or application consistency cannot be guaranteed.</p> </div> <p>The FR value is a custom created Windows Installer property that can be passed in on the command line. The default value is blank. Supplying any value for FR will enable the property. If supplied during uninstallation, it allows the LIFO uninstallation requirement to be disregarded. Some uninstall custom actions, which configure the application for use, are not executed when an FR value is provided.</p> <div style="border: 1px solid #ccc; padding: 5px; margin-top: 10px;"> <p>ex. <code>msiexec.exe /x {FCA6E3C0-3CA1-4985-B58B-D27AF658B02B} FR=1</code></p> </div>
----------------------	--------------------------------------------------------------------------------------------------------------------------------------------------------------------------------------------------------------------------------------------------------------------------------------------------------------------------------------------------------------------------------------------------------------------------------------------------------------------------------------------------------------------------------------------------------------------------------------------------------------------------------------------------------------------------------------------------------------------------------------------------------------------------------------------------------------------------------------------------------------------------------------------------------------------------------------------------------------------------------------------------------------------------

FR is not an option for ERDAS Desktop software prior to version 9.2. Pre-9.2 applications must be removed by Application Family in LIFO order, or certain registry keys manually adjusted to control the order in which applications are removed. Once an application is removed out-of-order, all applications in the the Application Family should be uninstalled before attempting to reinstall. Attempting to reinstall, after an out-of-order removal, without first removing all applications in the family, will lead to installation errors.

## ERDAS IMAGINE Installer Values

### ERDAS IMAGINE Product GUID

The Product GUID is required for unattended uninstalls of the product.

Version	Product GUID
ERDAS IMAGINE 9.2	{FCA6E3C0-3CA1-4985-B58B-D27AF658B02B}
ERDAS IMAGINE 9.3	{AFB497C5-1B86-4C49-B05D-403EA7BEA3E4}
ERDAS IMAGINE 2010 (v10)	{0D87F300-4FF0-4E32-961C-DB8532CAF446}
ERDAS IMAGINE 2011 (v11)	{C392A20A-361B-4779-AB41-EF059713ABA2}

### ERDAS IMAGINE 2011 (v11) Feature Codes

Feature codes can be employed to install specific portions of the application. They are used in conjunction with the ADDLOCAL, REMOVE, and REINSTALL [Windows Installer Properties](#) described above. For Feature Codes from previous versions, please see the Appendices.

Feature ID	Subfeature Of	Description:	Required
Shortcuts_And_Registry		Installs registry entries and shortcuts	Yes
imagine		Installs files necessary for ERDAS IMAGINE	Yes
imess	imagine	Installs files for IMAGINE Essentials (requires Java Runtime)	Yes
imadvan	imagine	Installs files for IMAGINE Advantage	No
improf	imagine	Installs files for IMAGINE Professional	No
imvirtual	imagine	Installs files for IMAGINE VirtualGIS	No
imnitf21	imagine	Installs files for IMAGINE NITF 2.1	No

imradar	imagine	Installs files for IMAGINE Radar Interpreter	No
imiee	imagine	Installs files for IMAGINE Enterprise Editor (requires Java Runtime)	No
javasup	imagine	Used by various application components. Not required if Java is already installed.	No
<b>imagineadditions</b>		Installs additional features for ERDAS IMAGINE	
imautosync	imagineadditions	Installs files for IMAGINE AutoSync	No
imdelta	imagineadditions	Installs files for IMAGINE DeltaCue	No
imfme	imagineadditions	IMAGINE Feature Interoperability	No
imvect	imagineadditions	Installs files for IMAGINE Vector	No
imobj	imagineadditions	Installs files for IMAGINE Objective (requires Java Runtime)	No
imhifi	imagineadditions	Installs files for ERDAS Stereo Analyst (for ERDAS IMAGINE)	No
imimagizer	imagineadditions	Installs files for IMAGIZER Data Prep	No
<b>entloader</b>	imagineadditions	Installs files for IMAGINE Enterprise Loader	No
imorvload	entloader	Vector Feature Loader for Oracle (requires Java Runtime)	No
imorload	entloader	Installs files for Georaster Loader for Oracle	No
<b>radarsuite</b>	imagineadditions	Installs files for IMAGINE Radar Mapping Suite	No
imrdrdem	radarsuite	Installs files for IMAGINE StereoSAR DEM	No
imsar	radarsuite	Install Files for IMAGINE SAR Interferometry	No
imordr	radarsuite	Installs files for IMAGINE OrthoRadar	No
<b>imhelp</b>	imagineadditions	Installs files for IMAGINE Help (requires Java Runtime)	No
imhshapp	imhelp	IMAGINE Shared Applications Help Files	No
imhadv	imhelp	IMAGINE Advantage Help Files	No
helpsupp	imhelp	Help Support Files	No
imhess	imhelp	IMAGINE Essentials Help Files	No
imhprof	imhelp	IMAGINE Professional Help Files	No
imhnitf	imhelp	IMAGINE NITF Help Files	No
imhiee	imhelp	IMAGINE Enterprise Editor Help Files	No
imhhifi	imhelp	ERDAS Stereo Analyst Help Files	No
imhauto	imhelp	IMAGINE AutoSync Help Files	No
imhvect	imhelp	IMAGINE Vector Help Files	No
imhvirt	imhelp	IMAGINE Virtual GIS Help Files	No
imhimag	imhelp	IMAGINE IMAGIZER Help Files	No
imhstdem	imhelp	IMAGINE Stereo SarDEM Help Files	No
imhordar	imhelp	IMAGINE OrthoRadar Help Files	No
imhdelta	imhelp	IMAGINE DeltaCue Help Files	No
imhobj	imhelp	IMAGINE Objective Help Files	No

imhsar	imhelp	IMAGINE SAR Interferometry Help Files	No
--------	--------	---------------------------------------	----

- The imhelp feature includes Start Menu shortcuts that launch application help documentation. These shortcuts are not included in another feature, therefore imhelp should be specified when installing help files from the command line.
- The javasupp feature is not a required feature, however, it is required to properly build indexes that display help documentation if another install of Java is not available on the system. If no other version of Java exists on the system and help is also being installed, the javasupp option should also be installed. See [Java Versions in ERDAS IMAGINE and LPS](#) for the version of java delivered with the products.

## LPS Installer Values

### LPS Product GUID

The Product GUID is required for unattended uninstalls of the product.

Version	Product GUID
Leica Photogrammetry Suite 9.2	{A1DA375D-E833-4F22-8AE8-D97D5CC90494}
LPS 9.3	{B148E6B8-3D1C-4EAC-80F3-1952E14568AF}
LPS 2010 (v10)	{237AC5EF-4585-4343-B8DB-02A328861AF3}
LPS 2011 (v11)	{112FF0D8-8FAA-430D-B278-AD4FBE874C98}

### LPS 2011 (v11) Feature Codes

Feature codes can be employed to install specific portions of the application. They are used in conjunction with the ADDLOCAL, REMOVE, and REINSTALL [Windows Installer Properties](#) described above. For Feature Codes from previous versions, please see the Appendices.

Feature ID	Subfeature Of	Description	Required
implps		Required LPS installation files	Yes
arcgis	implps	Installs files for ArcGIS support	Yes
imhifi		Files for ERDAS Stereo Analyst (for ERDAS IMAGINE)	No
imie		Installs files necessary for ImageEqualizer	No
javasup		Used by various application components. Not required if Java is already installed.	No
imhelp		Installs files necessary for LPS Online Help (requires Java Runtime)	No
helpsupp	imhelp	Help Support Files	No
imhshapp	imhelp	IMAGINE Shared Applications Help Files	No
imhess	imhelp	IMAGINE Essentials Help Files	No
imhadv	imhelp	IMAGINE Advantage Help Files	No
imhntf	imhelp	IMAGINE NITF Help Files	No
lpshelp	imhelp	LPS Help Files	No

- The imhelp feature includes Start Menu shortcuts that launch application help documentation. These shortcuts are not included in another feature, therefore imhelp should be specified when installing help files from the command line.
- The javasupp feature is not a required feature, however, it is required to properly build indexes that display help documentation if another install of Java is not available on the system. If no other version of Java exists on the system and help is also being installed, the javasupp option should also be installed. See [Java Versions in ERDAS IMAGINE and LPS](#) for the version of java delivered with the products.

## ER Mapper Installer Values

### ER Mapper Product GUID

The Product GUID is required for unattended uninstalls of the product.

Version	Product GUID
ER Mapper 2010 (v10)	{57620517-1EFE-454D-B716-CAAE224AFC87}
ER Mapper 2011 (v11)	{0FD40A80-1A8F-4419-8A05-79E7293427DE}

### ER Mapper 2010 Feature Codes

Feature codes can be employed to install specific portions of the application. They are used in conjunction with the ADDLOCAL, REMOVE, and REINSTALL [Windows Installer Properties](#) described above.

Feature ID	Subfeature Of	Description:	Required
Shortcuts_And_Registry		Installs the registry entries and shortcuts	Yes
ermapper		Installs files necessary for ERDAS ER Mapper	No
ermhelp	ermapper	Installs files for ER Mapper Help	No
exampledata	ermapper	Installs Example Data files	No

### Java Versions in ERDAS IMAGINE and LPS

Application Version	Java Version
9.2	JRE Standard Edition 1.6.0_02
9.3	JRE Standard Edition 1.6.0_06
2010 (v10)	JRE Standard Edition 1.6.0_06
2011 (v11)	JRE Standard Edition 1.6.0_20

---

## Appendices

### Appendix 1: Additional Command Line Examples

**Note:** Examples using "setup.exe" assume that setup is being launched from the directory containing setup.exe.

Ex. 1: Verbose Logging of an Uninstall.

```
msiexec.exe /x {ProductGUID} /lvx* "C:\temp folder\uninstall2345.txt"
```

Ex. 2: Installs IMAGINE Essentials, IMAGINE Advantage, IMAGINE Professional and IMAGINE VirtualGIS into the C:\IMAGINE\_9.2 directory.

```
setup.exe /S /V"/qr INSTALLDIR=C:\IMAGINE_9.2 ADDLOCAL=Shortcuts_And_Registry,imagine,imess,imadvan,improf,imvirtual"
```

Ex. 3. Basic logging of an Update or Service Pack (in this example the IMAGINE-LPS 9.3.1 Update) install. Not Silent.

```
C08111.exe /V"/I* C:\Temp\install12345.log"
```

## Appendix 2: Previous Release Notes

### LPS 9.2 and 9.3

#### LPS and .NET Framework version 2.0

Version 2.0 of the .NET Framework is a required LPS component that can be installed using the LPS installer. The .NET framework can NOT be installed by the LPS installer when the LPS installer is run in silent mode. When run in silent mode, if the LPS installer determines that the .NET 2.0 Framework does not exist on the target computer, the LPS installer will exit. A message is logged to the installer log to inform the user that installs of the .NET framework are not supported when LPS installer is run silently.

If for any reason the .NET Framework cannot be installed by the LPS installer, the "/nf" command line option can be supplied to bypass the installer's check for the Framework's presence. The .NET Framework should then be installed manually prior to launching the LPS installer.

#### LPS Command Line Options

Feature ID	Description
/nf	<p>/nf is a custom installer option that disables the installer's check for the 2.0 .NET Framework and allows the install to proceed when the framework does not exist on the target computer.</p> <p>The option is passed to the installer's setup.exe file via the ISSCRIPTCMDLINE method described above.</p> <p>ex. setup.exe /V"/ISSCRIPTCMDLINE="/nf""</p>

## Appendix 3: Previous Release Feature Codes

### ERDAS IMAGINE 2010 (v10) Feature Codes

Feature ID	Subfeature Of	Description:	Required
Shortcuts_And_Registry		Installs the registry entries and shortcuts	Yes
imagine		Installs files necessary for ERDAS IMAGINE	Yes
imess	imagine	Installs files for IMAGINE Essentials (requires Java Runtime)	Yes
imadvan	imagine	Installs files for IMAGINE Advantage	No
improf	imagine	Installs files for IMAGINE Professional	No
imautosync	imagine	Installs files for IMAGINE AutoSync	No
imvirtual	imagine	Installs files for IMAGINE VirtualGIS	No
imnitf21	imagine	Installs files for IMAGINE NITF 2.1	No
imobj	imagine	Installs files for IMAGINE Objective (requires Java Runtime)	No
imhifi	imagine	Installs files for ERDAS Stereo Analyst (for ERDAS IMAGINE)	No
imordr	imagine	Installs files for IMAGINE OrthoRadar	No

imsar	imagine	Install Files for IMAGINE SAR Interferometry	No
imrdrdem	imagine	Installs files for IMAGINE StereoSAR DEM	No
imradar	imagine	Installs files for IMAGINE Radar Interpreter	No
imdelta	imagine	Installs files for IMAGINE DeltaCue	No
imfme	imagine	IMAGINE Feature Interoperability	No
imvect	imagine	Installs files for IMAGINE Vector	No
imiee	imagine	Installs files for IMAGINE Enterprise Editor (requires Java Runtime)	No
imorvload	imagine	Vector Feature Loader for Oracle (requires Java Runtime)	No
imorload	imagine	Installs files for Georaster Loader for Oracle	No
imimagizer	imagine	Installs files for IMAGIZER Data Prep	No
imhelp	imagine	Installs files for IMAGINE Help (requires Java Runtime)	No
javasup	imagine	Used by various application components. Not required if Java is already installed.	No
imhshapp	imhelp	IMAGINE Shared Applications Help Files	No
imhadv	imhelp	IMAGINE Advantage Help Files	No
helpsupp	imhelp	Help Support Files	No
imhess	imhelp	IMAGINE Essentials Help Files	No
imhprof	imhelp	IMAGINE Professional Help Files	No
imhntif	imhelp	IMAGINE NITF Help Files	No
imhiee	imhelp	IMAGINE Enterprise Editor Help Files	No
imhhifi	imhelp	ERDAS Stereo Analyst Help Files	No
imhauto	imhelp	IMAGINE AutoSync Help Files	No
imhvect	imhelp	IMAGINE Vector Help Files	No
imhvirt	imhelp	IMAGINE Virtual GIS Help Files	No
imhimag	imhelp	IMAGINE IMAGIZER Help Files	No
imhstdem	imhelp	IMAGINE Stereo SarDEM Help Files	No
imhordar	imhelp	IMAGINE OrthoRadar Help Files	No
imhdelta	imhelp	IMAGINE DeltaCue Help Files	No
imhobj	imhelp	IMAGINE Objective Help Files	No
imhsar	imhelp	IMAGINE SAR Interferometry Help Files	No

### IMAGINE 9.3 Feature Codes

Feature ID	Subfeature Of	Description:	Required
Shortcuts_And_Registry		Installs the registry entries and shortcuts	Yes
imagine		Installs files necessary for ERDAS IMAGINE	Yes
imess	imagine	Installs files for IMAGINE Essentials (requires Java Runtime)	Yes
imadvan	imagine	Installs files for IMAGINE Advantage	No
improf	imagine	Installs files for IMAGINE Professional	No
imautosync	imagine	Installs files for IMAGINE AutoSync	No

imhifi	imagine	Installs files for Leica Stereo Analyst (for ERDAS IMAGINE)	No
ccd	imagine	Installs files for IMAGINE Coherence Change Detection	No
imifsdem	imagine	Installs files for IMAGINE InSAR	No
imimagizer	imagine	Installs files for IMAGIZER Data Prep	No
imnif21	imagine	Installs files for IMAGINE NITF 2.1	No
imobj	imagine	Installs files for IMAGINE Objective (requires Java Runtime)	No
imordr	imagine	Installs files for IMAGINE OrthoRadar	No
imradar	imagine	Installs files for IMAGINE Radar Interpreter	No
imrdrdem	imagine	Installs files for IMAGINE StereoSAR DEM	No
imvect	imagine	Installs files for IMAGINE Vector	No
imvirtual	imagine	Installs files for IMAGINE VirtualGIS	No
imhelp	imagine	Installs files for IMAGINE Help (requires Java Runtime)	No
imiee	imagine	Installs files for IMAGINE Enterprise Editor (requires Java Runtime)	No
imorload	imagine	Installs files for Georaster Loader for Oracle	No
imorvload	imagine	Vector Feature Loader for Oracle (requires Java Runtime)	No
imdelta	imagine	Installs files for IMAGINE DeltaCue	No
javasup	imagine	Used by various application components. Not required if Java is already installed.	No
borrowing		A utility for checking out FLEXnet floating licenses.	No
safenet		SafeNet Driver	No
flexid		FlexID Dongle Driver	No
licensing		Files Related to ERDAS-Net Licensing	No
helpsupp	imhelp	Help Support Files	No
imhadv	imhelp	IMAGINE Advantage Help Files	No
imhauto	imhelp	IMAGINE AutoSync Help Files	No
imhdelta	imhelp	IMAGINE DeltaCue Help Files	No
imhhifi	imhelp	Leica Stereo Analyst Help Files	No
imhess	imhelp	IMAGINE Essentials Help Files	No
imhiee	imhelp	IMAGINE Enterprise Editor Help Files	No
imhimag	imhelp	IMAGINE IMAGIZER Help Files	No
imhnitf	imhelp	IMAGINE NITF Help Files	No
imhifsar	imhelp	IMAGINE InSAR Help Files	No
imhordar	imhelp	IMAGINE OrthoRadar Help Files	No
imhprof	imhelp	IMAGINE Professional Help Files	No
imhshapp	imhelp	IMAGINE Shared Applications Help Files	No
imhstdem	imhelp	IMAGINE Stereo SarDEM Help Files	No
imhvect	imhelp	IMAGINE Vector Help Files	No
imhvirt	imhelp	IMAGINE Virtual GIS Help Files	No
imhobj	imhelp	IMAGINE Objective Help Files	No
ccdhelp	imhelp	IMAGINE Coherence Change Detection Help Files	No

## IMAGINE 9.2 Feature Codes

Feature ID	Subfeature Of	Description:	Required
Shortcuts_And_Registry		Installs the registry entries and shortcuts	Yes
imagine		Installs files necessary for ERDAS IMAGINE	Yes
imess	imagine	Installs files for IMAGINE Essentials (requires Java Runtime)	Yes
imadvan	imagine	Installs files for IMAGINE Advantage	No
improf	imagine	Installs files for IMAGINE Professional	No
imautosync	imagine	Installs files for IMAGINE AutoSync	No
imhifi	imagine	Installs files for Leica Stereo Analyst (for ERDAS IMAGINE)	No
imifsdem	imagine	Installs files for IMAGINE InSAR	No
imimagizer	imagine	Installs files for IMAGIZER Data Prep	No
imnif21	imagine	Installs files for IMAGINE NITF 2.1	No
imordr	imagine	Installs files for IMAGINE OrthoRadar	No
imradar	imagine	Installs files for IMAGINE Radar Interpreter	No
imrdrdem	imagine	Installs files for IMAGINE StereoSAR DEM	No
imvect	imagine	Installs files for IMAGINE Vector	No
imvirtual	imagine	Installs files for IMAGINE VirtualGIS	No
imhelp	imagine	Installs files for IMAGINE Help (requires Java Runtime)	No
imiee	imagine	Installs files for IMAGINE Enterprise Editor (requires Java Runtime)	No
imorload	imagine	Installs files for Georaster Loader for Oracle	No
imorvload	imagine	Vector Feature Loader for Oracle (requires Java Runtime)	No
imdelta	imagine	Installs files for IMAGINE DeltaCue	No
javasup	imagine	Used by various application components. Not required if Java is already installed.	No
helpsupp	imhelp	Help Support Files	No
imhadv	imhelp	IMAGINE Advantage Help Files	No
imhauto	imhelp	IMAGINE AutoSync Help Files	No
imhdelta	imhelp	IMAGINE DeltaCue Help Files	No
imhhifi	imhelp	Leica Stereo Analyst Help Files	No
imhess	imhelp	IMAGINE Essentials Help Files	No
imhiee	imhelp	IMAGINE Enterprise Editor Help Files	No
imhimag	imhelp	IMAGINE IMAGIZER Help Files	No
imhnif	imhelp	IMAGINE NITF Help Files	No
imifsar	imhelp	IMAGINE InSAR Help Files	No
imhordar	imhelp	IMAGINE OrthoRadar Help Files	No
imhprof	imhelp	IMAGINE Professional Help Files	No
imhshapp	imhelp	IMAGINE Shared Applications Help Files	No
imhstdem	imhelp	IMAGINE Stereo SarDEM Help Files	No
imhvect	imhelp	IMAGINE Vector Help Files	No
imhvirt	imhelp	IMAGINE Virtual GIS Help Files	No

## LPS 2010 (v10) Feature Codes

Feature ID	Subfeature Of	Description	Required
impls		Required LPS installation files	Yes
arcgis	impls	Installs files for ArcGIS support	Yes
imhifi		Installs files necessary for Leica Stereo Analyst	No
imie		Installs files necessary for ImageEqualizer	No
imhelp		Installs files necessary for LPS Online Help (requires Java Runtime)	Yes
helpsupp	imhelp	Help Support Files	No
imhshapp	imhelp	IMAGINE Shared Applications Help Files	No
imhess	imhelp	IMAGINE Essentials Help Files	No
imhadv	imhelp	IMAGINE Advantage Help Files	No
imhnitf	imhelp	IMAGINE NITF Help Files	No
lpshelp	imhelp	LPS Help Files	No
javasup		Used by various application components. Not required if Java is already installed.	No

## LPS 9.3 Feature Codes

Feature ID	Subfeature Of	Description	Required
impls		Required Leica Photogrammetry Suite installation files	Yes
arcgis	impls	Installs files for ArcGIS support	No
imhifi		Installs files necessary for Leica Stereo Analyst	No
imie		Installs files necessary for ImageEqualizer	No
imhelp		Installs files necessary for LPS Online Help (requires Java Runtime)	Yes
helpsupp	imhelp	Help Support Files	No
imhshapp	imhelp	IMAGINE Shared Applications Help Files	No
imhess	imhelp	IMAGINE Essentials Help Files	No
imhadv	imhelp	IMAGINE Advantage Help Files	No
imhnitf	imhelp	IMAGINE NITF Help Files	No
lpshelp	imhelp	LPS Help Files	No
javasup		Used by various application components. Not required if Java is already installed.	No
borrowing		A utility for checking out FLEXnet floating licenses.	No
safenet		SafeNet Driver	No
flexid		FlexID Dongle Driver	No
licensing		Files Related to ERDAS-Net Licensing	No

## LPS 9.2 Feature Codes

Feature ID	Subfeature Of	Description	Required
impls		Required Leica Photogrammetry Suite installation files	Yes
arcgis	impls	Installs files for ArcGIS support	No
imhifi		Installs files necessary for Leica Stereo Analyst	No

imie		Installs files necessary for ImageEqualizer	No
imhelp		Installs files necessary for LPS Online Help (requires Java Runtime)	Yes
helpsupp	imhelp	Help Support Files	No
imhshapp	imhelp	IMAGINE Shared Applications Help Files	No
imhess	imhelp	IMAGINE Essentials Help Files	No
imhadv	imhelp	IMAGINE Advantage Help Files	No
imhnitf	imhelp	IMAGINE NITF Help Files	No
lpshelp	imhelp	LPS Help Files	No
javasup		Used by various application components. Not required if Java is already installed.	No

### ER Mapper 2010 Feature Codes

Feature ID	Subfeature Of	Description:	Required
Shortcuts_And_Registry		Installs the registry entries and shortcuts	Yes
ermapper		Installs files necessary for ERDAS ER Mapper	No
ermhelp	ermapper	Installs files for ERMapper Help	No

---