

Installation Guide

ERDAS Foundation 2011

December 2010

ERDAS Foundation 2011 is a bundle of several components which are utilized in all ERDAS products. This includes providing support for EGM 2008 (Earth Gravitational Model) datum in all ERDAS 2011 vertical-datum-aware products. Rather than require you to download multiple, redundant copies of this large datum (and other capabilities) for each product you install, ERDAS Foundation 2011 is a uniform, pre-requisite installer that delivers a single copy of EGM 2008 and several other large files used across the ERDAS product lines.

A Prerequisite to Installing ERDAS 2011 Products

Installation of an ERDAS 2011 product is now a two-step process. Before an ERDAS 2011 product can be installed, the ERDAS Foundation must be installed. The ERDAS 2011 product installer will refuse to install until the Foundation is present. After the Foundation is installed on a system, any number of ERDAS 2011 products may then be installed on the same system using a single installation of ERDAS Foundation.

- ERDAS Foundation installation must precede installation of other ERDAS products
- Only one installation of the ERDAS Foundation is required on any system; then multiple ERDAS products may be installed on that system
- To avoid coordinate processing failures, you must install the ERDAS Foundation before you can install any ERDAS Products that require it
- You must not remove (uninstall) the ERDAS Foundation before you have removed all ERDAS products that rely upon it

ERDAS Products that Require the ERDAS Foundation

ERDAS 2011 products that require prior installation of the ERDAS Foundation are:

- ERDAS IMAGINE (*exception: Example Data*)
- ERDAS LPS (*exceptions: ORIMA, PRO600, Condor for ERDAS 2011, example data*)
- ERDAS APOLLO (*exceptions: Essentials IWS, Collaboration module in Advantage, Data Manager*)
- ERDAS ER Mapper

Other exceptions include ERDAS Extensions for ArcGIS, ERDAS TITAN Client and the ECW JPEG200 SDK.

Included in Foundation Installer

The ERDAS Foundation installer includes:

- EGM 2008
- Other sizable datums used to perform coordinate transformations
- ERDAS-Net Licensing
- Microsoft Runtime libraries (e.g. MSVCRT) required by applications

While ERDAS-Net is bundled into ERDAS Foundation, you are still eligible to install ERDAS-Net standalone. If you install ERDAS-Net and then later decide to install the Foundation, ERDAS-Net will not be reinstalled (although it may be upgraded to the version included within the Foundation).

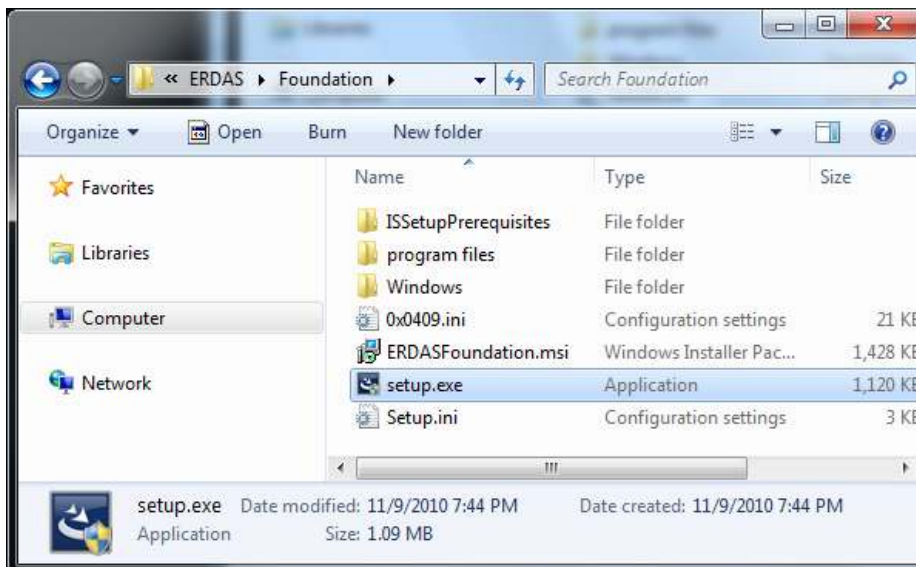
Installation Process

The ERDAS Foundation 2011 is available on the ERDAS 2011 products DVD and may also be downloaded from the ERDAS website www.erdas.com.

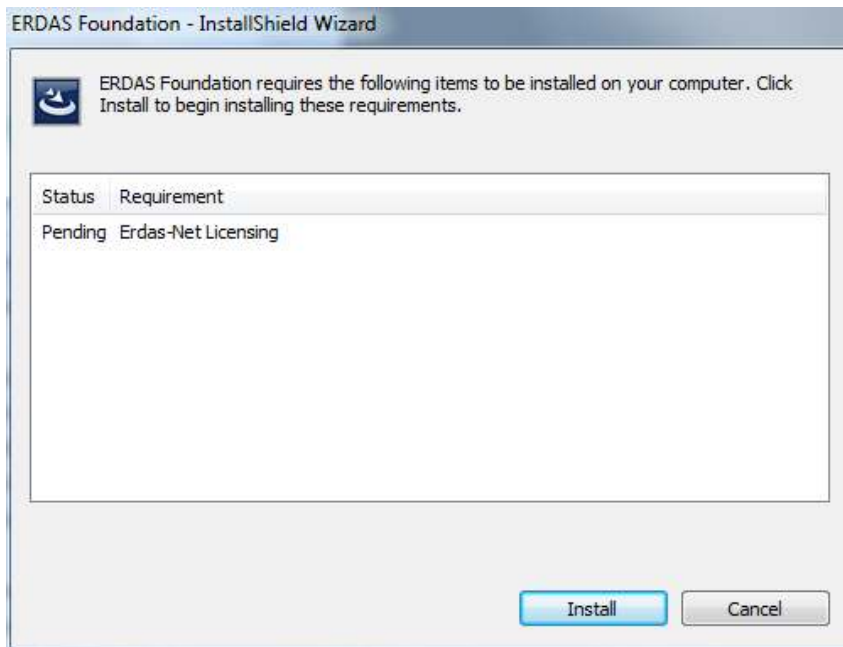
From the ERDAS 2011 products DVD: Simply click on the ERDAS product you wish to install. If the current ERDAS Foundation is required and not present, the DVD loader will automatically initiate installation of ERDAS Foundation. If a current ERDAS Foundation is discovered on the system, the ERDAS product installation will commence.



From the ERDAS website: ERDAS 2011 products are distributed via individual zip files from the ERDAS website. Therefore, if the current ERDAS Foundation is required and not present, the ERDAS Foundation installer must be separately downloaded, unzipped and executed by double clicking on "Setup.exe".

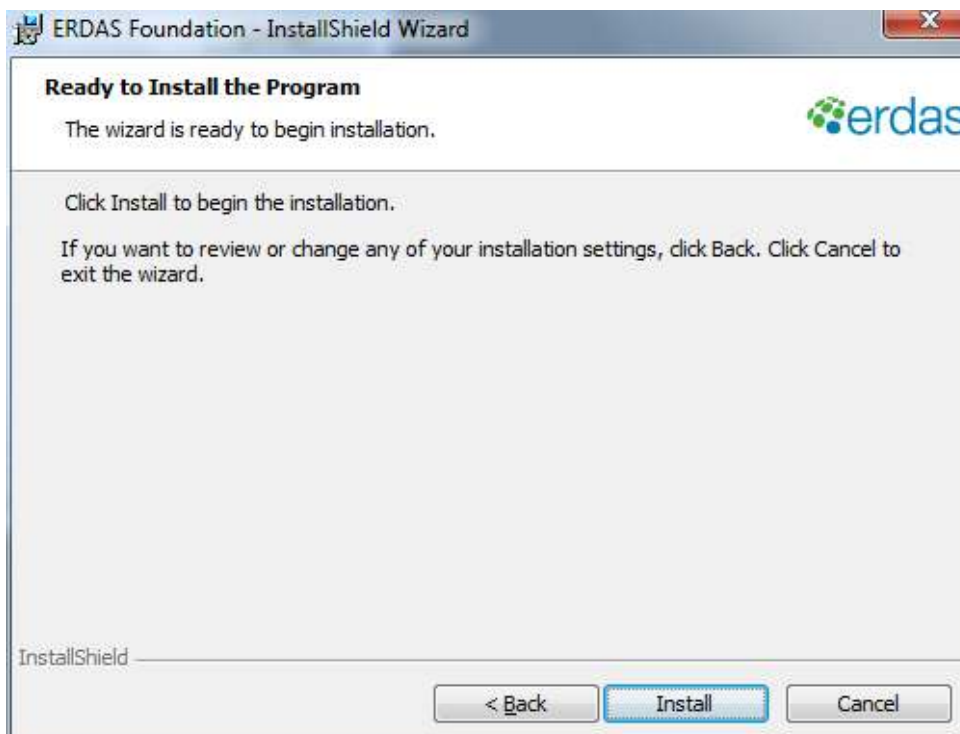
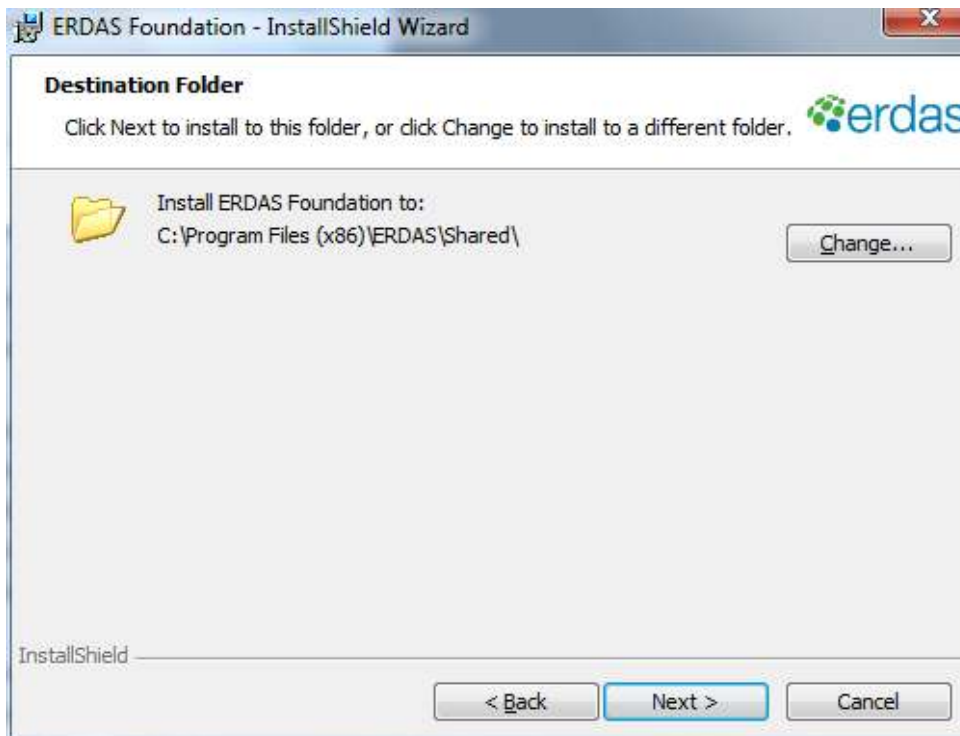


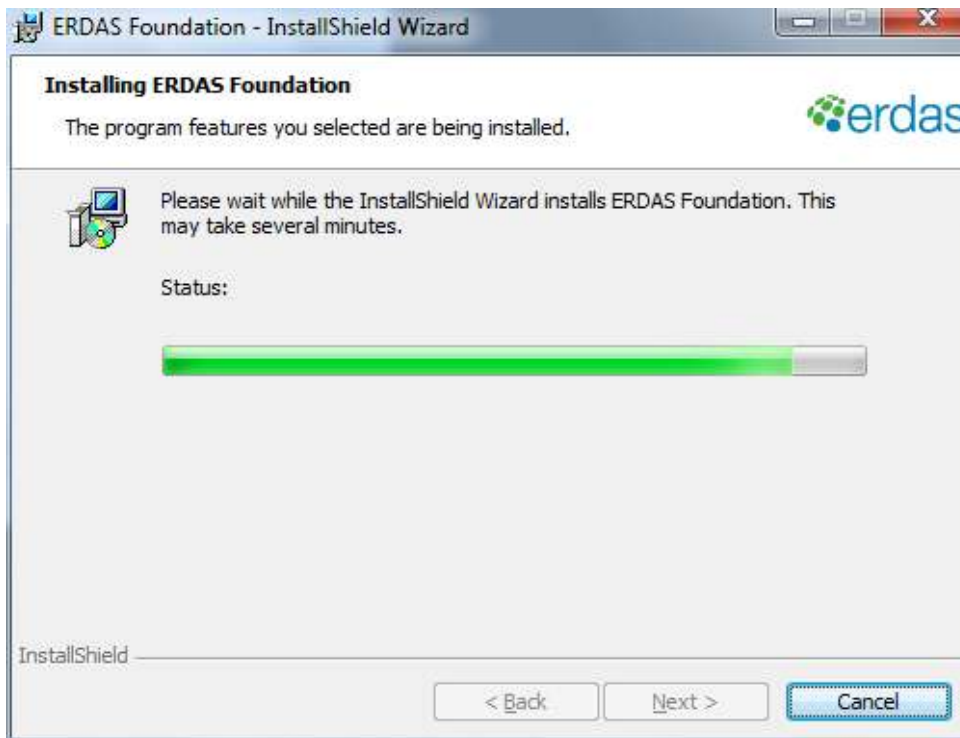
ERDAS Net Licensing: If current ERDAS-Net Licensing is required and not present, the ERDAS Foundation installer will automatically initiate installation of the ERDAS Net Licensing. If a current ERDAS-Net is discovered on the system, ERDAS Foundation installation will commence.



Foundation Installer Screenshots







After the Foundation is installed on a system: Proceed with installation of any number of ERDAS 2011 products on the same system.

For more information on the ERDAS Foundation, please visit www.erdas.com/foundation.