

Revolutionize Your Geospatial Workflow with ERDAS 2011 Software

Revolutionize Your Geospatial Workflow with ERDAS 2011 Software

For over 32 years, ERDAS has rapidly progressed as one of the geospatial industry leaders, cultivating a rich and powerful feature set along the way. In this modern age of convenience and instant gratification, it's not enough to simply provide information; it must be easily accessible and available almost instantaneously. These expectations drive customers to boost output and shorten production times. In response, ERDAS has increased its focus on streamlining and accelerating workflows. For the ERDAS 2011 Software Release, these improvements were largely made by providing software additions that enhance ease-of-use and enable users to leverage all their available hardware.

ERDAS products are designed to enable users to tackle every step of their geospatial workflow - authoring data sets from raw data, managing extensive volumes of data, connecting users so they can share and collaborate, and delivering information to other users and organizations. To ensure that users are able to work efficiently and smoothly transition data from one step to the next, some changes have been made across the entire product portfolio.

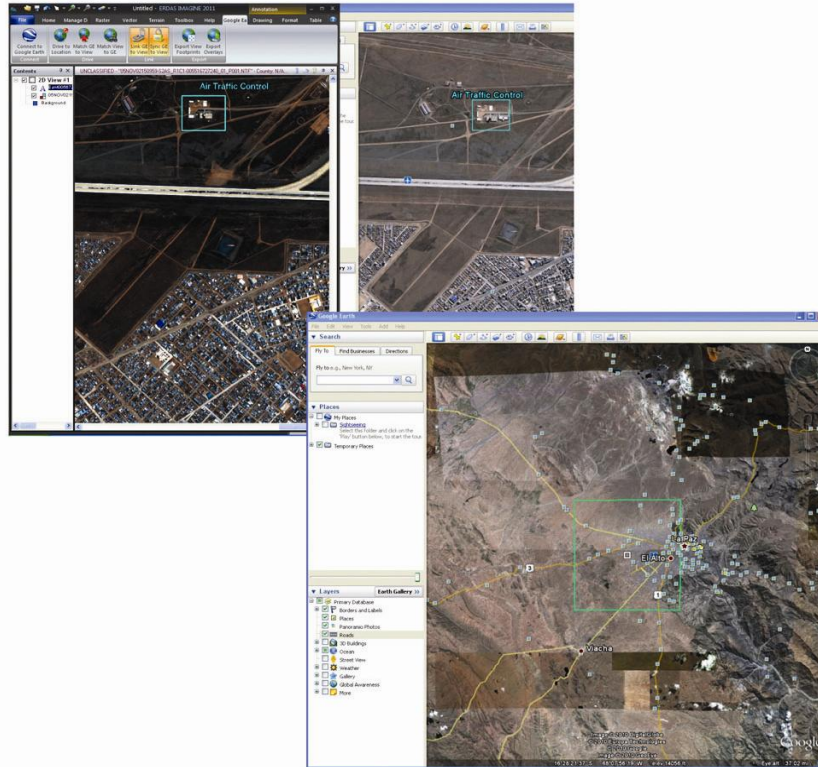
Portfolio-wide changes for the ERDAS 2011 Software Release include the ability to localize ERDAS products for a global audience, integrated support for Microsoft Bing™ Maps base imagery and map data, distributed processing throughout the desktop offerings, and a new product, ERDAS Engine. ERDAS Engine is a simple, cost-effective solution that boosts processing power for ERDAS IMAGINE and LPS, leveraging existing hardware resources for increased production needs or situations requiring faster production output.

Individual products also underwent exciting changes, advancing customer productivity through improvements in usability and speed.

ERDAS IMAGINE

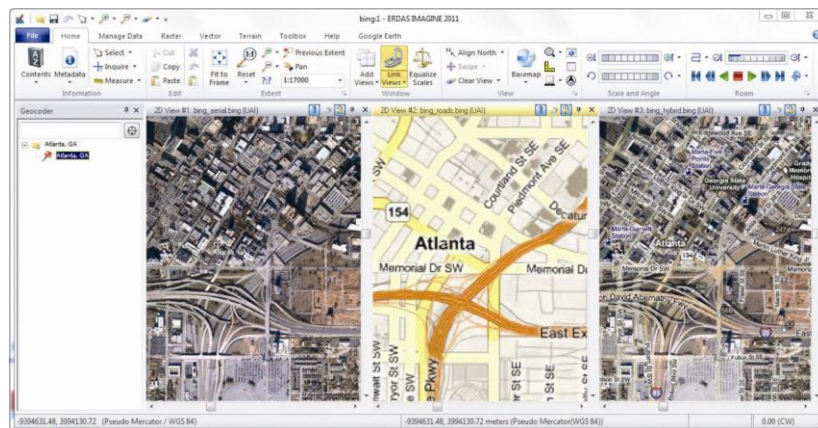
ERDAS IMAGINE®, the world's leading geospatial data authoring system, incorporates geospatial image processing and analysis, remote sensing and GIS into a single powerful, convenient package. ERDAS IMAGINE enables users to easily create value-added products such as 2D and 3D images, 3D flythrough movies, and cartographic-quality map compositions from geospatial data. ERDAS IMAGINE also provides advanced tools for parallel batch processing, spatial modeling, map production, mosaicking and change detection.

In ERDAS IMAGINE 2011, users will see enhancements that facilitate everyday workflows so they can produce more in less time, while still achieving the superior results that have become synonymous with ERDAS IMAGINE.



Connect and synchronize the ERDAS IMAGINE Viewer with Google Earth

Much of the usability gain stems from the ability to interact with other popular geospatial products, such as Google Earth and Bing Maps. For instance, users can link imagery shown in ERDAS IMAGINE viewers to Google Earth to easily see the global context of their imagery. ERDAS IMAGINE shares its annotations with Google Earth and enables users to synchronize the views in the two applications and export image footprints and annotation layers to KML files. ERDAS IMAGINE 2011 also provides access to rich, high-quality base imagery and geo-coding services provided by the Microsoft Bing Maps platform. Many of the tools in ERDAS IMAGINE are integrated with these base maps, making it easy to measure distance, perform change detection and other types of analytics.



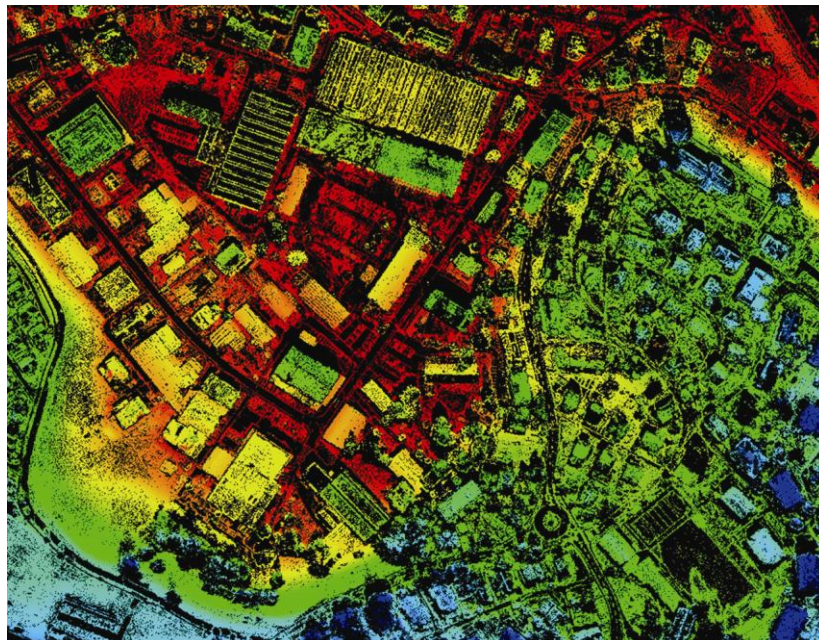
Use Microsoft Bing Maps as a base map or for geocoding in ERDAS IMAGINE

Another significant change in ERDAS IMAGINE 2011 is the streamlined imagery analysis workflows. The most demanding image analysts, including those in the defense and intelligence community, will benefit from new tools and an enhanced interface designed for quick and easy creation of presentation products. The improved workflow offers new report templates with elements (labels, scale bar, north arrow, coordinates, etc.) that update automatically based on the imagery loaded into the template. Many of the standard templates include an auto-generated country map that clearly indicates the location of the imagery. Additionally, users can annotate imagery with text tools that work similarly to the ubiquitous Microsoft Office and easily create inset views that highlight specific areas with greater detail. Once reports are complete, a single click exports them to Microsoft PowerPoint, Word, or JPEG.

ERDAS IMAGINE 2011 also introduces Hyperspherical Color Space (HCS) pan sharpening, developed specifically for WorldView-2 data from DigitalGlobe. WorldView-2 provides the only high-resolution 8-band multispectral commercial imagery available. ERDAS IMAGINE multispectral image processing capabilities enable users to leverage the wealth of information inherent in WorldView-2 imagery and deliver intelligence and highly accurate terrain, feature and image products.

LPS

LPS is a powerful, workflow-oriented photogrammetry system for production mapping, including full analytical triangulation, the generation of digital terrain models, orthophoto production, mosaicking, and 3D feature extraction. Accuracy reports, built-in data quality checks, and editing tools make it easy to maintain unwavering levels of quality.



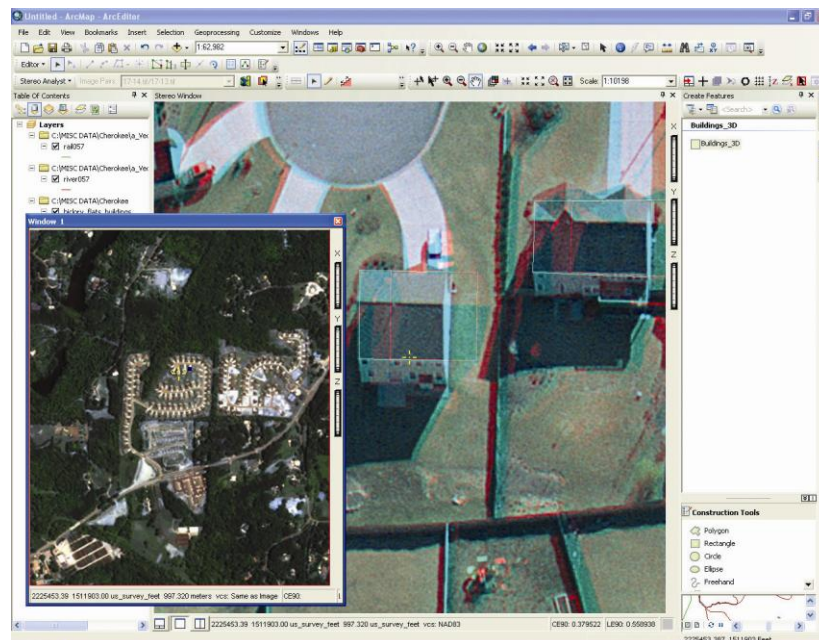
Pixel-wise data extracted with LPS eATE. Point cloud, 3D and cross sectional views of the surface are shown in Fugro Viewer.

As production mapping shops face higher demand, they have demanded a product that would allow them to step up production efficiently, cost-effectively, and with the same high standard of accuracy they've come to expect from LPS. LPS 2011 meets that challenge by offering distributed processing, which enables users to leverage multi-core CPUs and multiple networked servers to increase production throughput and accelerate processes like ortho generation. LPS 2011 combines its existing batch processing capabilities with Condor (third-party software available for free download) to harness the power of several networked computers for high throughput ortho generation.

LPS eATE is an add-on module for LPS that derives dense point clouds from stereo imagery. For this release, LPS eATE adds the ability to distribute the Digital Terrain Model (DTM) merging process to the existing ability to distribute terrain extraction, further reducing overall processing time. LPS 2011 also provides gains in efficiency. Users can now generate orthophotos for an area of interest defined by a shapefile or AOI, excluding unnecessary pixels from processing and reducing the time and resources required for the ortho production process. Additionally, the Stereo Point Measurement (SPM) tool now supports the use of multiple orthophotos (base maps) as a horizontal reference source of ground control points. Orthophotos are conveniently shown in the image list based on the degree of overlap with the master image and users can easily identify reference points in stereo and mono modes.

ERDAS Extensions for ArcGIS

ERDAS Extensions for ArcGIS is a production suite of stereo visualization tools that integrate seamlessly into the ArcGIS® environment. Stereo visualization enables users to view imagery in 3D, facilitating interpretation of topological features and allowing more spatially accurate feature collection than digitizing features from an orthorectified image.



Stereo Analyst supports launching a MultiView window where you can load an alternate stereo pair, orthorectified image or calibrated image to use as an alternate collection source. Once finished, dismiss the view and pick up where you left off in the primary window, or leave the view open for later use.

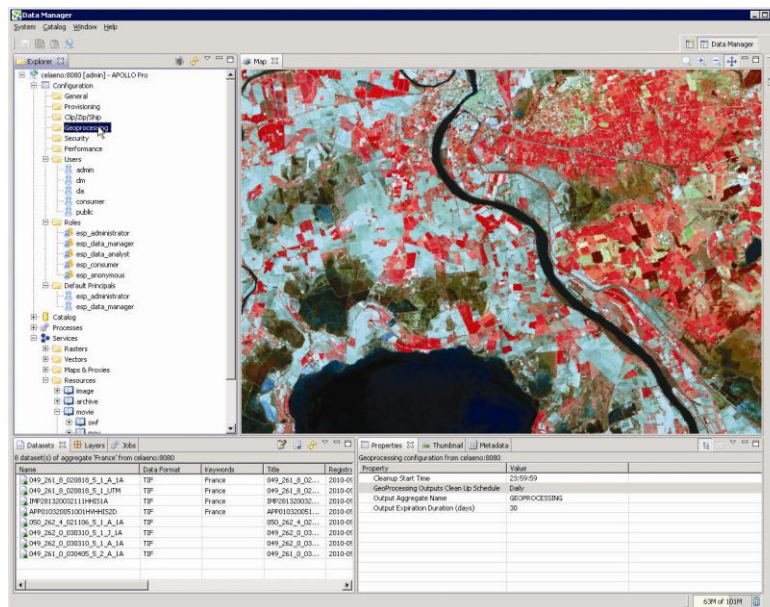
By working inside an environment users are already familiar with, this solution provides the most accurate image processing and stereo feature collection possible with minimal capital expenditure, training requirements or changes to existing workflow.

This release of the ERDAS Extensions features essential updates that provide full compatibility with the ArcGIS 10 platform. Additionally, users may utilize a new Flip Window tool, offering improved control of the stereo window. Accessible through an icon on the Stereo View toolbar, the tool enables 180-degree rotation of the displayed stereo pair. ERDAS Extensions for ArcGIS 10 also offers easier access to commonly used settings, default 'drive to' behavior on multiview windows, and improvements to the display speed and performance of the stereo window.

ERDAS APOLLO

ERDAS APOLLO is the market-leading solution for managing and delivering feature data, terrain and virtually any other digital object in an enterprise. ERDAS APOLLO consistently delivers more data quicker and with less hardware than competing image serving products. An interoperable OGC/ISO based solution, ERDAS APOLLO integrates easily with other geospatial software and offers unparalleled performance, even when handling massive data archives and many users.

ERDAS APOLLO 2011 further improves the reliability and scalability of the system via clustering, in which multiple servers work in concert to improve performance. Clustering increases the number of users the system can serve and improves system reliability by allowing other servers to handle requests if a server goes down.



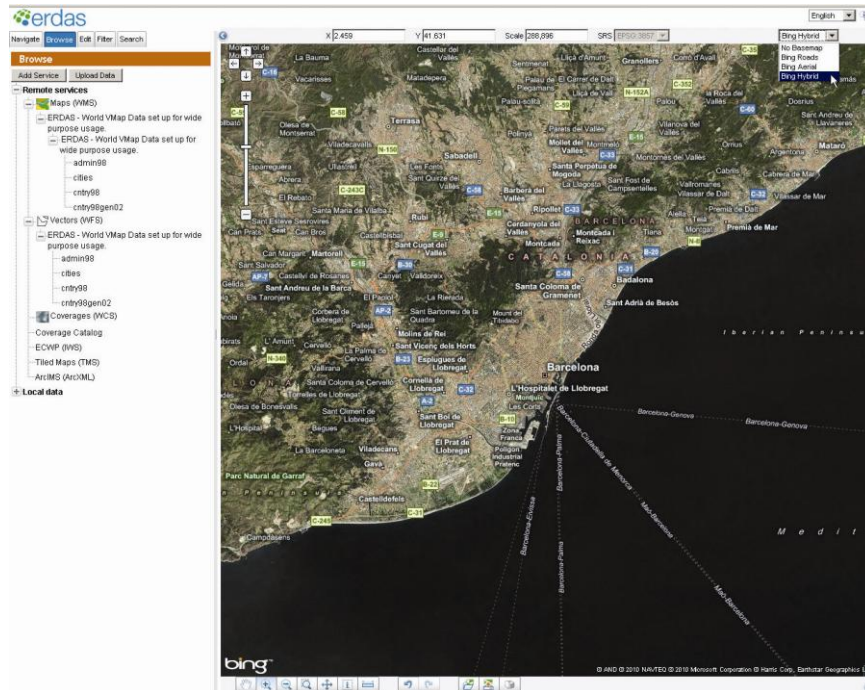
Remotely configure the ERDAS APOLLO Web Processing Service options, custom users/roles and the user execute permissions using the ERDAS APOLLO Data Manager.

Additionally, ERDAS APOLLO 2011 features significant usability enhancements. Base maps from Microsoft Bing Maps are now available in both the ERDAS APOLLO web client and the ERDAS TITAN Client (offered with ERDAS APOLLO Advantage), Bing Maps in ERDAS APOLLO provides a premium map-viewing experience and offers three different map sources: Bing Maps Roads (a map with roads and labels), Bing Maps Aerial (an aerial imagery map) and Bing Maps Hybrid (an aerial map with roads and labels).

ERDAS APOLLO Data Manager now provides a convenient interface to easily modify frequently used server configuration parameters such as system security, users and roles, performance and other common settings. It also features improvements for editing metadata using familiar spreadsheet controls, and enables bulk metadata editing of multiple datasets.

ERDAS APOLLO 2011 extends its data format support to include cataloging and serving LiDAR (LAS) files. Metadata is extracted and cataloged, and hill-shaded views for each LAS file can be consumed in the ERDAS APOLLO web client. End users may download a subset of the data via the Clip, Zip and Ship workflow, or even download the original LAS file, using the ERDAS APOLLO web client.

ERDAS APOLLO 2011 also introduces support for the OGC-specified Web Map Tiling Service (WMTS), which enables high-performance serving of spatially-referenced map tiles. WMTS in ERDAS APOLLO is designed to complement WMS and provide simple integration and overlay with applications such as Google Maps and Bing Maps, OpenStreetMap, and other web services.



Choose one of the three map sources available from Bing Maps Platform to use as Basemap for your data in the ERDAS APOLLO Web Client or TITAN.

ERDAS 2011...and Beyond

To introduce the world to the latest software release, ERDAS has launched the 11 World Tour, which includes live software demonstration and presentation, and the opportunity for users worldwide to interact and communicate directly with the ERDAS team and partners. The kick-off for the 11 World Tour took place in early November at the GEOINT Symposium in New Orleans, LA. Events are scheduled around the world, reaching every continent (except Antarctica) before it concludes in May 2011. In addition to providing a forum for customers to ask questions and see the software, these events are a valuable opportunity for ERDAS, enabling the company to collect user feedback and gather industry information to better shape the future of its product portfolio.

For more information about Intergraph, visit our Web site at www.intergraph.com. For more information about ERDAS, visit our Web site at www.erdas.com

Intergraph, the ERDAS logo and the Intergraph logo are registered trademarks of Intergraph Corporation. Other brands and product names are trademarks of their respective owners. Intergraph believes that the information in this publication is accurate as of its publication date. Such information is subject to change without notice. Intergraph is not responsible for inadvertent errors. ©2012 Intergraph Corporation. All Rights Reserved. Date Document #